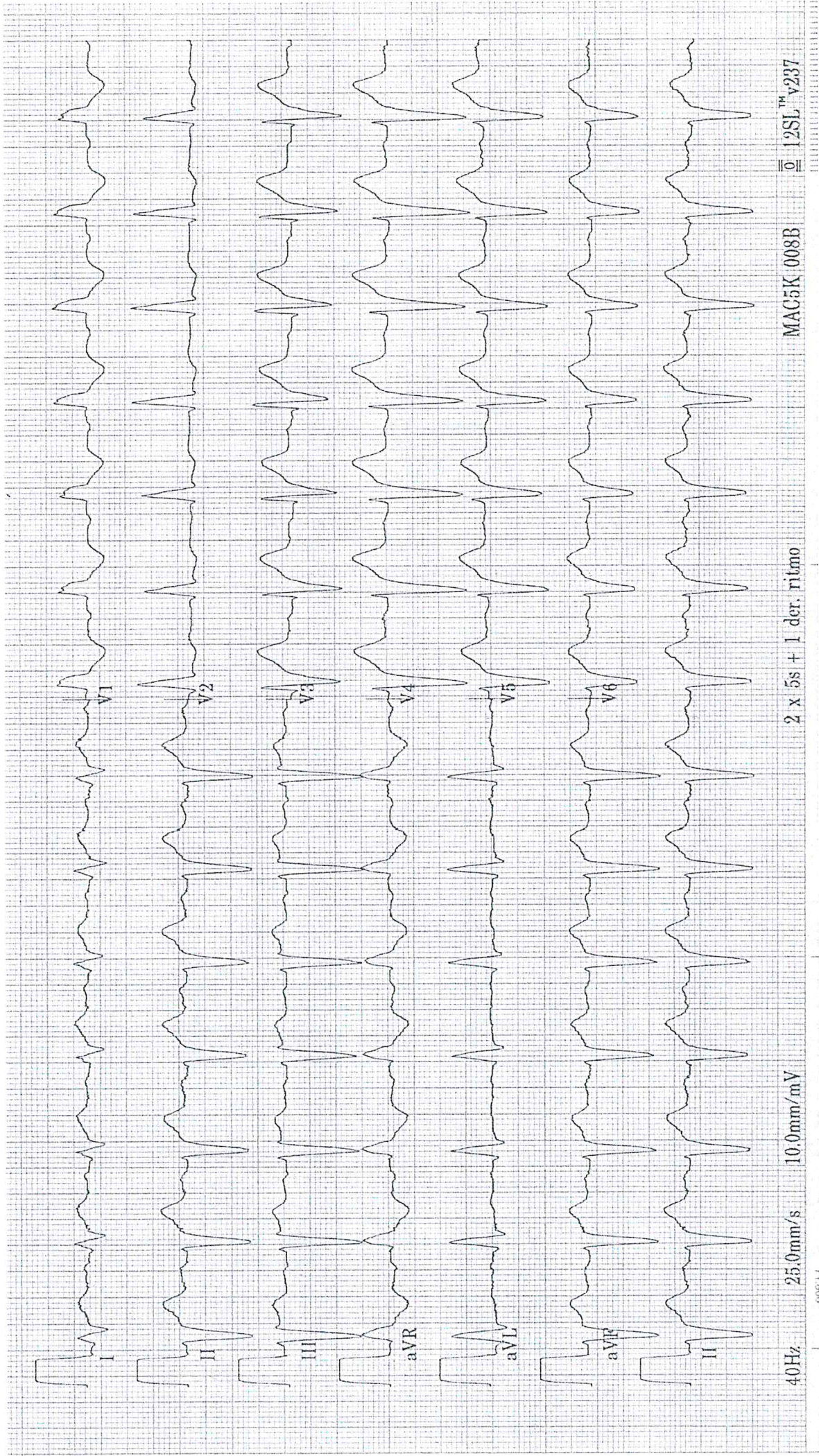


ECG caso clínico 1



EGA e ASO Clinico 1

Emogasanalisi arteriosa			
pH	7.35	*	(7.35 - 7.45)
pCO2	58	*	(35 - 45)
pO2	79		(75 - 100)
HCO3-att	31.9	*	(22 - 29)
BE (B)	4.5	*	(-2.0 - +2.0)
O2SAT	96		(95 - 99)
BE (ecf)	6.2	*	(-1.0 - +1.0)
ct Hb	14.0		(13.5 - 17.5)
HCT	43.0	%	(41 - 53)
HCO3 - std	28.4	*	(17 - 20)
FO2 Hb	93.2	%	< 2.0 Fumatori fino 8%
FCOHb	2.1	*	
FHHb	3.7	%	
FmetHb	1.0	%	< 1.5
p50c	24.51	mmHg	
ctO2	18.4	%	
Na	138.0	mmol/L	(136 - 146)
K	4.2	mmol/L	(3.5 - 5.3)
Cl	97.0	mmol/L	(97 - 110)
Ca++	1.22	mmol/L	(1.15 - 1.25)
Glu	118	mg/dl	(70 -110)
Lac	1.6	mmol/L	(0.5 - 1.6)
Anion Gap	8.9	mmol/L	