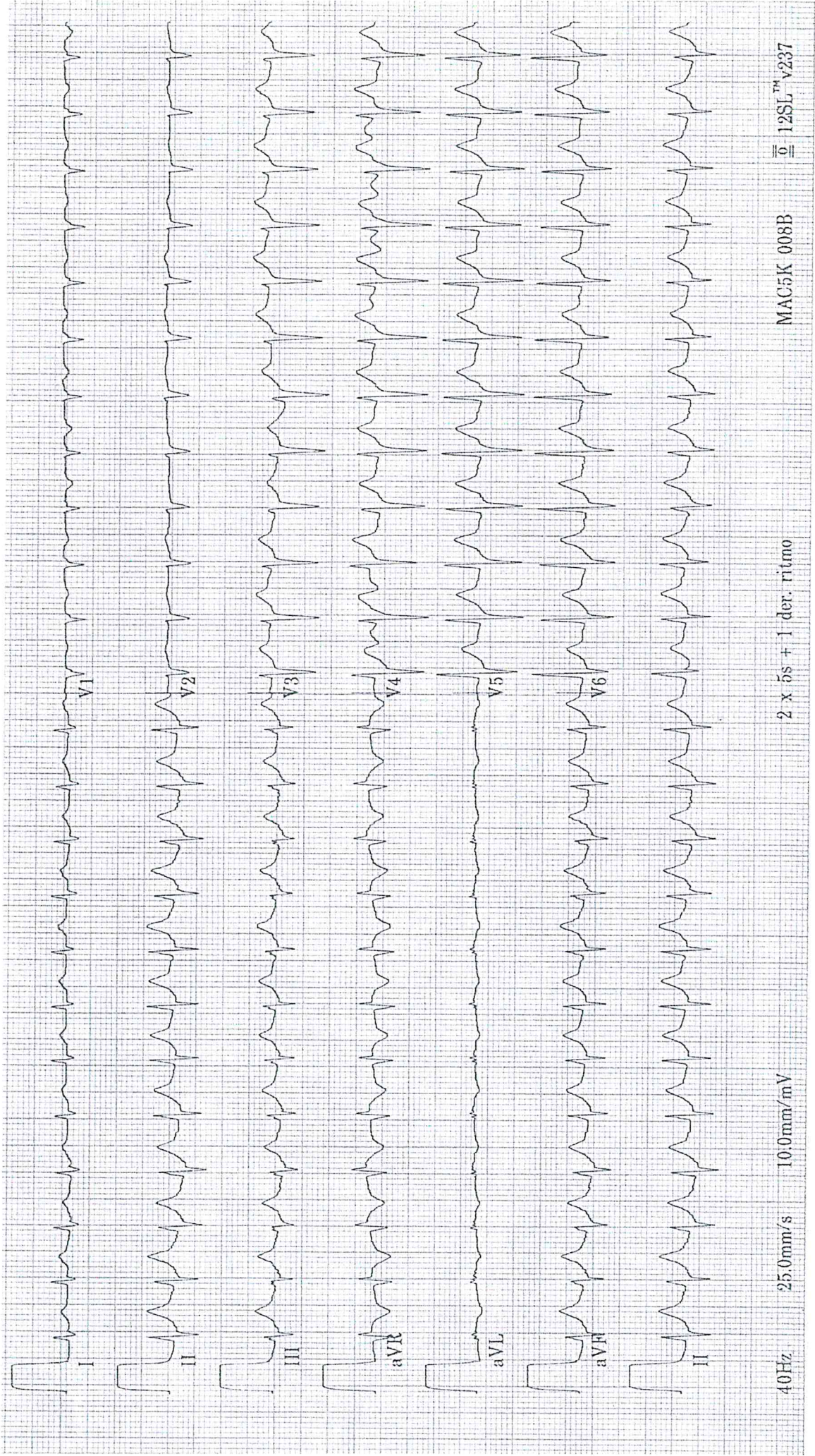


*EKG CASO CLINICO 3*





# EGA CASO CLINICO 3

Valori emogas			
↓ pH	7,333		[ 7,350 - 7,450 ]
pCO <sub>2</sub>	37,9	mmHg	[ 35,0 - 45,0 ]
↓ pO <sub>2</sub>	56,1	mmHg	[ 75,0 - 100 ]
Valori ossimetrici			
ctHb	17,0	g/dL	[ - - ]
Hct,c	52,1	%	[ - - ]
↓ sO <sub>2</sub>	87,7	%	[ 95,0 - 99,0 ]
FO <sub>2</sub> Hb	85,3	%	
FCOHb	1,9	%	[ 0,0 - 2,0 ]
FHHb	12,0	%	
FMetHb	0,8	%	[ - 1,5 ]
Valori calcolati			
p50,c	27,73	mmHg	
ctO <sub>2</sub> ,c	20,3	Vol%	
pO <sub>2</sub> (a)/FO <sub>2</sub> (l),c	234	mmHg	
Stato acido-base			
↓ cHCO <sub>3</sub> <sup>-</sup> (P),c	20,1	mmol/L	[ 22,0 - 29,0 ]
cHCO <sub>3</sub> <sup>-</sup> (P.st),c	19,9	mmol/L	[ 17,0 - 20,0 ]
↓ cBase(B),c	-5,2	mmol/L	[ -2,0 - 2,0 ]
↓ cBase(Ecf),c	-5,8	mmol/L	[ -1,0 - 1,0 ]
Valori elettroliti			
cNa <sup>+</sup>	138	mmol/L	[ 136 - 146 ]
cK <sup>+</sup>	3,7	mmol/L	[ 3,5 - 5,3 ]
cCl <sup>-</sup>	108	mmol/L	[ 97 - 110 ]
↓ cCa <sup>2+</sup>	1,06	mmol/L	[ 1,15 - 1,25 ]
Anion Gap,c	10,6	mmol/L	
Valori metaboliti			
↑ cGlu	115	mg/dL	[ 70 - 110 ]
↑ cLac	5,1	mmol/L	[ 0,5 - 1,6 ]
ctBil	1,2	mg/dL	[ - - ]